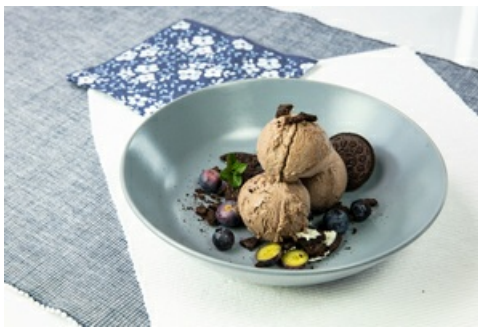




OREO® ICE CREAM



QimiQ BENEFITS

- Creamy indulgent taste with less fat
- Enhances the natural taste of added ingredients
- Quick and easy - only 2 preparation steps



10



easy

INGREDIENTS FOR 4 PORTIONS

250 g QimiQ Whip Pastry Cream, chilled

100 ml Milk

130 g Oreo® cookies

1 Lemon(s), juice only

METHOD

1. Blend the ingredients together with an immersion blender until smooth.
2. Fill into a mixing bowl and whip until the required volume has been achieved.
3. Deep freeze.
4. **Tip:** Serve with blueberries.